

JCB TANDEM VIBRATORY ROLLER | VMT160



A Product
of Hard Work

Setting new standards

The new VMT I60 tandem rollers are quite simply the most productive machines available in this high volume sector. In fact, it is safe to say that with this range, JCB has established a new benchmark in choice, comfort, control, reliability, serviceability and performance.

Designed completely from scratch, the VMT I60 range consists of five models: the I60-80, I60-90 and I60-100 have drum widths of 800mm, 900mm and 1000mm respectively, plus the 800mm and 900mm versions are available with Total Side Clearance (VMT I60-80 TSC and VMT I60-90 TSC).

All of these models benefit from the inclusion of a class-leading 45-litre diesel tank combined with a 125-litre water tank. This allows the VMT I60 to work at maximum capacity for much longer than its nearest rivals, giving you up to a whole day of extra usage.

We have also introduced new, ergonomic seating and conveniently positioned, user-friendly controls. So whatever you're doing (from rolling sub-base and finish rolling asphalt materials, to patch and repair works) and wherever you're doing it (access roads, yards, residential streets, car parks, highways, airports) these rollers are simplicity itself to operate.

Add all of this to JCB's legendary build quality and the best back up in the business, and you have a range of tandem rollers that just can't be beaten.

WORK FLAT OUT



FOR UP TO TWICE AS LONG



A Product
of Hard Work

FAST FACTS

- Largest diesel and water tanks mean you can work flat out for up to twice as long
- Three-cylinder, water-cooled, four-stroke engine delivers maximum power
- Electrically controlled hydrostatic direct drive on both drums enhances versatility
- Superb stability increases operating safety
- Total Side Clearance (TSC) does away with need for separate perimeter tamping



Power and performance

The JCB Vibromax VMT range is renowned for its excellent combination of static weight, centrifugal force, amplitude, tight turning circle and fast rolling speed. The new VMT I60s boast these same key qualities as well as adding greater power, performance and attention to detail into the mix.

Perhaps the most impressive development to have been incorporated into these machines is the high capacity fuel and water tanks, which enable them to outperform all the competition when it comes to productivity. The 45-litre diesel engine tank is nearly double the market average of 24 litres, while the 125-litre water tank is significantly greater than the 90-litre market average.

What this all means is that, based on an average consumption of three litres per hour, the VMT I60 gives you 7 hours' extra usage than the competition. Basically these machines can work flat out for up to twice as long.

All five machines in the range feature a new three-cylinder, water-cooled, four-stroke engine that delivers maximum power at reduced noise levels. Electrically controlled hydrostatic direct drive on both drums enables you to maximise performance on any application by selecting double vibration, single front

vibration or single rear vibration. Plus, VMT I60s feature Automatic Vibration Control (AVC) as standard, while exceptional stability provides optimum operating safety.

Customers can opt for Total Side Clearance (TSC) operation. There are two models, VMT I60-80 and VMT I60-90, in the range are available with TSC, which enables you to get close up to the edge saving the time often taken to compact perimeter areas.

Such incredible power and performance, plus the added versatility that comes from being easily transportable on a trailer (non TSC models weigh 1600-1700kg), equals a compaction solution that is fast becoming indispensable.







Comfortable, controllable, reliable

In a sector renowned for the somewhat 'basic' design of its equipment, the new modern styling of the VMT I60 will come as a very welcome change. These machines are designed with operator comfort and safety firmly in mind.

The fully adjustable, comfortable and spacious seating position, cup holder and safety switch, is easily accessible from both sides of the machine. It also offers a clear view for increased accuracy and safety while work is in progress.

Safety on site is enhanced by a reverse alarm, emergency stop button and front and rear working lights as standard, with optional foldable or fixed ROPS frame and a flashing beacon.

The new VMT I60 also features a newly designed control layout, with simple and clearly labelled controls and an informative indicator dashboard, making operation much more user friendly. Meanwhile, precision control is achieved through the servo driving lever and engine speed control.

Furthermore the VMT I60 possesses excellent manoeuvrability characteristics combined with fast rolling speeds making it a highly flexible machine to cater for all on-site requirements.

As you would expect from a world-class manufacturer with a reputation for excellence, the build quality of the VMT I60 models is of the highest standard, ensuring you maximum durability and reliability. And as for servicing, we've made life easier by reducing maintenance requirements and ensuring all routine checks are easily accessible.

Power and performance just don't come in a more comfortable, controllable or reliable package.



FAST FACTS

- New design for improved operator comfort combined with extreme robustness
- Fully adjustable, spacious seating is accessible from both sides
- Excellent manoeuvrability characteristics and fast rolling speeds
- Newly designed control layout makes for intuitive operation
- Servo driving lever and engine speed control improve controllability



VMT160 MACHINE

CHASSIS

- Robust and strong, articulated
- Heavy duty maintenance free centre joint
- +/- 65mm drum offset (option)
- Equal weight distribution (front and rear)

VIBRATION

- AVC – Automatic Vibration Control
- Double, or single-front, or single-rear vibration

WATER SPRINKLER SYSTEM

- 2 solid steel spray bars on each drum
- Changeable nozzles with excellent service access
- Pressurised water system
- Largest water tank in the industry of 125 litres
- Lockable water filler

SCRAPERS

- 2 per drum
- Spring loaded for optimised use and prolonged life

BRAKES

- Spring-applied, hydraulically released parking brakes on each drum



E WALKAROUND



SERVICE ACCESS

- 100% access to all components under lightweight hood, electrics in steering column

DRIVERS PLATFORM

- Very spacious, comfortable and adjustable drivers seat with (arm rests as option)
- Access from both sides of machine
- Optimal visibility
- Cup holder

COMPONENTS

- High quality, reliable components
- Proven over many years
- Powerful, water cooled and low noise diesel engine

DRUMS

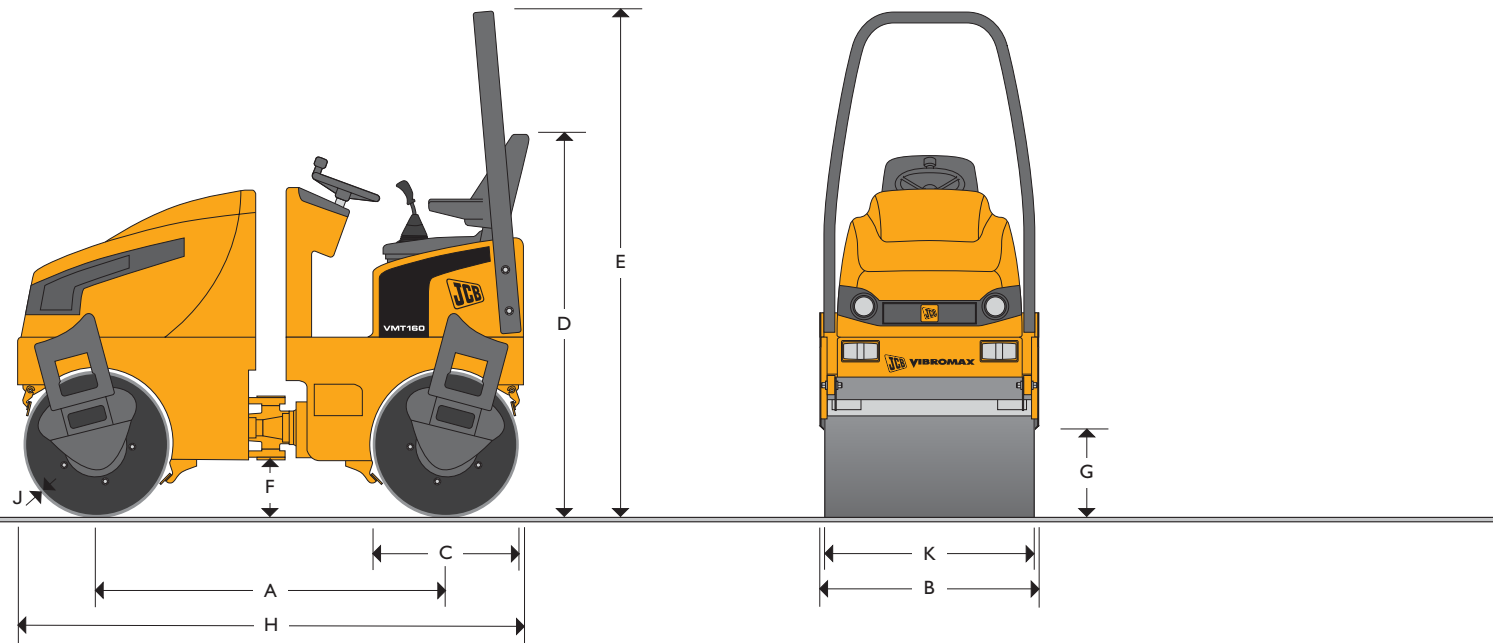
- Strong and reliable vibration and drive motors
- Oil splash lubricated exciter shaft bearings
- Hydrostatic propulsion and vibration on both drums
- Machined drum surfaces for concentricity
- Single piece circular exciter for long life



JCB VIBROMAX – COMPACTION EQUIPMENT TANDEM VIBRATORY ROLLER VMT 160



DRUM WIDTH: 800mm – 1000mm (31.5in – 39.4in)
OPERATING WEIGHT: 1600kg – 1700kg (3527lb – 3747lb)



STATIC DIMENSIONS

Dimensions in millimetres (in)	VMT 160-80	VMT 160-90	VMT 160-100
A Wheelbase	1350 (53.1)	1350 (53.1)	1350 (53.1)
B Overall width	880 (34.6)	980 (38.6)	1080 (42.5)
C Drum diameter	580 (22.8)	580 (22.8)	580 (22.8)
D Height to top of seat	1600 (63)	1600 (63)	1600 (63)
E Height to top of ROPS	2320 (91.3)	2320 (91.3)	2320 (91.3)
F Ground clearance	290 (11.4)	290 (11.4)	290 (11.4)
G Curb clearance	350 (13.8)	350 (13.8)	350 (13.8)
H Total travel length	2140 (84.2)	2140 (84.2)	2140 (84.2)
J Drum thickness	12 (0.47)	12 (0.47)	12 (0.47)
K Drum width	800 (31.5)	900 (35.4)	1000 (39.3)

OPERATING DATA

		VMT 160-80	VMT 160-90	VMT 160-100
Operating weight	kg	1600	1650	1700
Working width	mm	800	900	1000
Operating linear load	kg/cm	10	9.2	8.5
Exciter frequency	Hz	50 ... 66	50 ... 66	50 ... 66
Nominal amplitude	mm	0.5	0.5	0.5
Centrifugal force (each drum)	kN	9.2 ... 18	9.2 ... 18	9.2 ... 18
Max. Working speed	km/h	0 ... 9	0 ... 9	0 ... 9
Drum offset left / right – manual (option)	mm	65	65	65
Steering angle	°	±30	±30	±30
Oscillation angle	°	±8	±8	±8
Inner turning radius	mm	2120	2070	2020
Gradeability with vibration up to	° (%)	17 (30)	17 (30)	17 (30)
Gradeability without vibration up to	° (%)	22 (40)	22 (40)	22 (40)



JCB VIBROMAX – COMPACTION EQUIPMENT TANDEM VIBRATORY ROLLER **VMT 160**



ENGINE

Make	KUBOTA	
Model	D1005	
Type	3 cylinder, water-cooled, four-stroke diesel engine	
Piston displacement	cm ³	1001
Performance	kW (hp)	17 (23)
Operating speed	min ⁻¹ (rpm)	3000
Starting device	Electric motor	
Air cleaner	Dry cartridge plus safety cartridge	
Fuel filter	Cartridge	
Fuel consumption	l/h	2.5

PROPULSION

Hydrostatic with variable displacement pump and fixed displacement motors with direct drive to both drums = double drum drive.

EXCITER DRIVE

Electrically controlled hydrostatic direct drive on both drums for double vibration or single vibration front or rear; AVC (automatic vibration control).

EXCITER

Single-shaft circular exciter.

STEERING SYSTEM

Servo assisted, maintenance free center articulation with oscillation facility, front and rear winching points.

SERVICE CAPACITIES

Fuel	litres	45
Sprinkler water	litres	125

BRAKING SYSTEM

Service brake: Hydrostatic propulsion system.
Parking brake: Hydraulically released brake on both drums (SAHR).

ELECTRICAL SYSTEM

Working lights, backup alarm, safety switch in operators seat.

Voltage	V	12
Battery capacity	Ah	66
Alternator	A	40

SPRINKLER/SCRAPER

Pressurized sprinkling system, Spring loaded retractable scraper (two each drum), changeable nozzles, multiple water filtering.

DRIVERS STAND/INSTRUMENTS

Fuel, battery charging current, sprinkler system, parking brake, hour meter, engine oil pressure, air filter condition, hydraulic oil level and temperature, water level indicator, cup holder, comfortable adjustable operator seat.

OPTIONS

ROPS (standard at CE), foldable ROPS, Total Side Clearance (TSC) operation (160-80 & 160-90), drum offset, lights for road traffic, flashing beacon, battery isolating switch, central lifting eye, driver seat with arm rests.



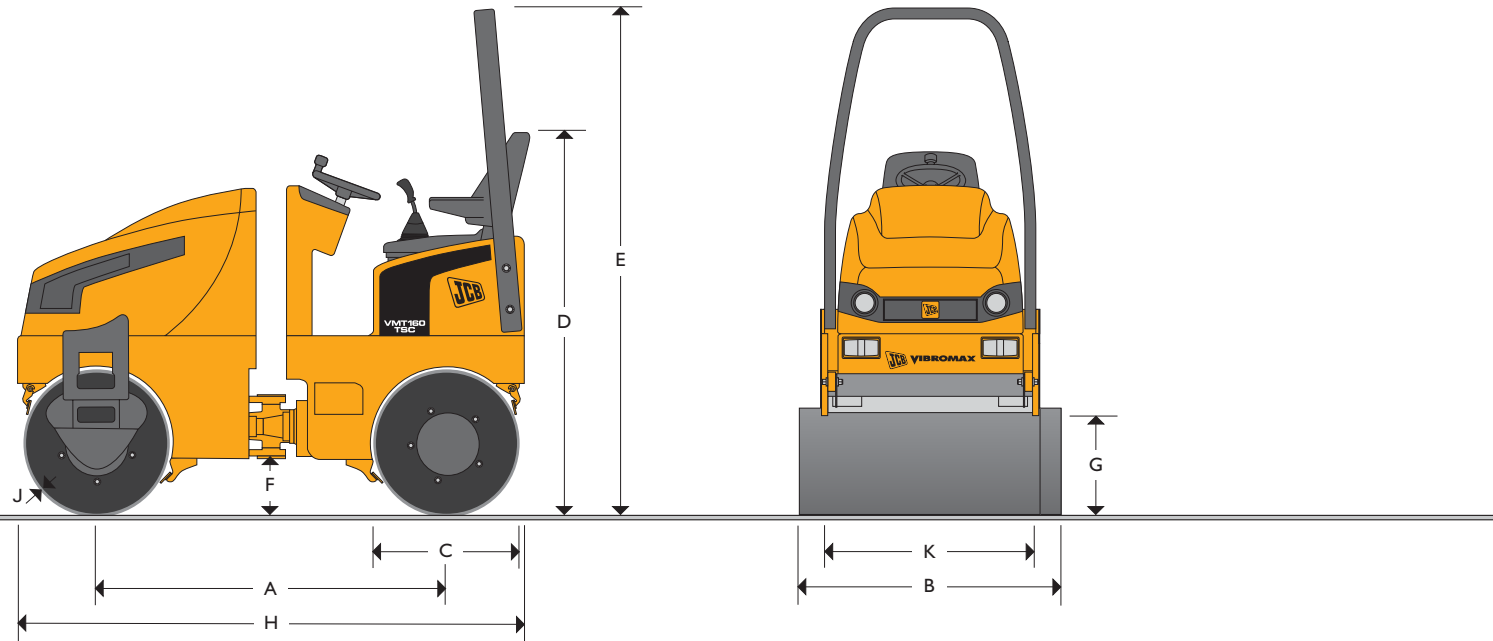
A Product
of Hard Work



JCB VIBROMAX – COMPACTION EQUIPMENT TANDEM VIBRATORY ROLLER VMT160TSC



DRUM WIDTH:	800mm – 900mm (31.5in – 35.4in)
WORKING WIDTH:	900mm – 1000mm (35.4in – 39.3in) TOTAL SIDE CLEARANCE
OPERATING WEIGHT:	1600kg – 1650kg (3527lb – 3637lb)



STATIC DIMENSIONS

Dimensions in millimetres (in)	VMT160-80TSC	VMT160-90TSC
A Wheelbase	1350 (53.1)	1350 (53.1)
B Overall width = total working width	900 (35.4)	1000 (39.3)
C Drum diameter	580 (22.8)	580 (22.8)
D Height to top of seat	1600 (63)	1600 (63)
E Height to top of ROPS	2320 (91.3)	2320 (91.3)
F Ground clearance	290 (11.4)	290 (11.4)
G Curb clearance	350 (13.8)	350 (13.8)
H Total travel length	2140 (84.2)	2140 (84.2)
J Drum thickness	12 (0.47)	12 (0.47)
K Drum width	800 (31.5)	900 (35.4)

OPERATING DATA

		VMT160-80TSC	VMT160-90TSC
Operating weight	kg	1600	1650
Working width	mm	900	1000
Operating linear load	kg/cm	10	9.2
Exciter frequency	Hz	50 ... 66	50 ... 66
Nominal amplitude	mm	0.5	0.5
Centrifugal force (each drum)	kN	9.2 ... 18	9.2 ... 18
Max. Working speed	km/h	0 ... 9	0 ... 9
Drum offset left / right – manual (option)	mm	65	65
Steering angle	°	±30	±30
Oscillation angle	°	±8	±8
Inner turning radius	mm	2030	1980
Gradeability with vibration up to	° (%)	17 (30)	17 (30)
Gradeability without vibration up to	° (%)	22 (40)	22 (40)



JCB VIBROMAX – COMPACTION EQUIPMENT TANDEM VIBRATORY ROLLER VMT160TSC



ENGINE

Make	KUBOTA	
Model	D1005	
Type	3 cylinder, water-cooled, four-stroke diesel engine	
Piston displacement	cm ³	1001
Performance	kW (hp)	17 (23)
Operating speed	min ⁻¹ (rpm)	3000
Starting device	Electric motor	
Air cleaner	Dry cartridge plus safety cartridge	
Fuel filter	Cartridge	
Fuel consumption	l/h	2.5

PROPULSION

Hydrostatic with variable displacement pump and fixed displacement motors with direct drive to both drums = double drum drive.

EXCITER DRIVE

Electrically controlled hydrostatic direct drive on both drums for double vibration or single vibration front or rear, AVC (automatic vibration control).

EXCITER

Single-shaft circular exciter.

STEERING SYSTEM

Servo assisted, maintenance free center articulation with oscillation facility, front and rear winching points.

SERVICE CAPACITIES

Fuel	litres	45
Sprinkler water	litres	125

BRAKING SYSTEM

Service brake: Hydrostatic propulsion system.
Parking brake: Hydraulically released brake on both drums (SAHR).

ELECTRICAL SYSTEM

Working lights, backup alarm, safety switch in operators seat.

Voltage	V	12
Battery capacity	Ah	66
Alternator	A	40

SPRINKLER/SCRAPER

Pressurized sprinkling system, Spring loaded retractable scraper (two each drum), changeable nozzles, multiple water filtering.

DRIVERS STAND/INSTRUMENTS

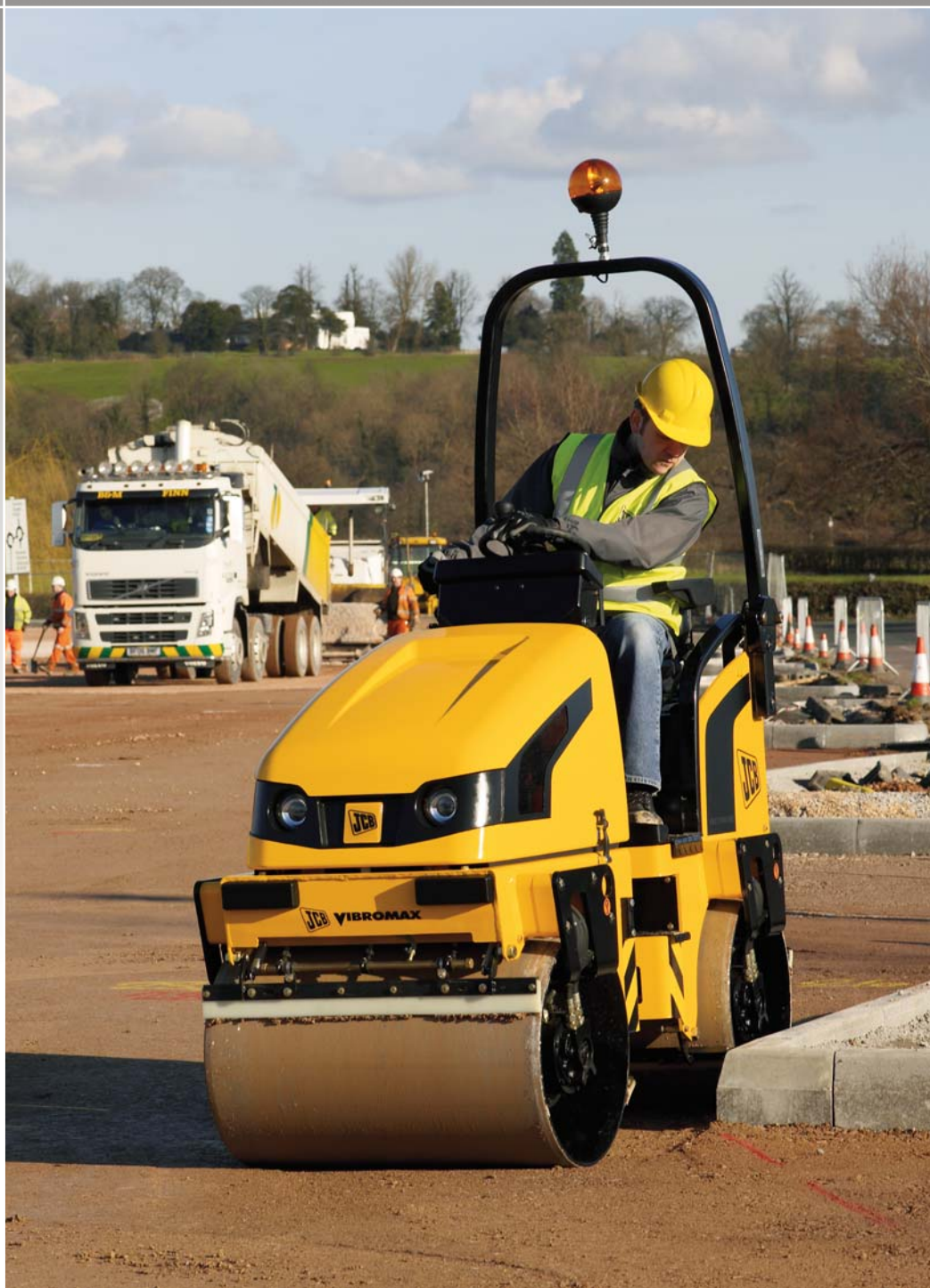
Fuel, battery charging current, sprinkler system, parking brake, hour meter, engine oil pressure, air filter condition, hydraulic oil level and temperature, water level indicator, cup holder, comfortable adjustable operator seat.

OPTIONS

ROPS (standard at CE), foldable ROPS, Total Side Clearance (TSC) operation (160-80 & 160-90), sunroof, drum offset, lights for road traffic, flashing beacon, battery isolating switch, central lifting eye, arm rests for driver seat



A Product
of Hard Work



The best back-up in the business

Always on hand to help

You demand more from your machines than ever before: more efficiency, more reliability, more performance. That's why superb product support has never been so vital.



Together with our extensive dealer network, at JCB we're as innovative and forward-thinking when it comes to customer care as we are in machine development. Our product support and after-sales service have one aim: to give you peace of mind.

The care and quality we offer is exceptional. All servicing is carried out by the best, factory-trained JCB engineers. Using the internet to pass vital information between on-site service personnel and our product support engineers, these professionals always have specialist information at their fingertips, so they can get you up and running again, faster.

Protect your machine and your cashflow

Everyone has individual needs and preferences. So we offer a range of service options all designed to help you cope with the unexpected and minimise costly downtime. Whether it's additional breakdown cover, an all-inclusive scheduled service programme, or servicing, we've got the best service option for you.



Finance packages, tailored to your needs

With ever-growing pressures on cashflows, the finance options available through JCB can provide a vital lifeline. Backed by JCB Finance, who can provide tax-efficient and cost-effective finance solutions, designed and tailored specifically to your needs.

Trust the genuine article

JCB parts are renowned worldwide for performance, reliability and safety. With replacement parts, we supply only the genuine

article, helping to safeguard the impressive residual values that you can expect in years to come.

As well as large stocks of parts engineered specifically for your machine, your JCB dealer also holds an extensive range of JCB: Filters, Lubricants, Grease, Wearparts, Tyres, Rubber Tracks and Service Exchange Components all manufactured to the same exacting standards. Your requirements can usually be supplied immediately by our dealers, but where this is not possible they can be ordered through the direct computer link between your dealer and JCB Service and processed through our impressive automated World Parts Centre warehouse. Despatch is normally the same day either to you or the dealer.

Whether we're providing you with support, parts or finance, we aim for 100% satisfaction. It's all part of our promise to put you, the customer, first.





**A Product
of Hard Work**

JCB Vibromax GmbH, Schaeferberg 1, D-06466 Gatersleben. Tel: 0049.(0)39482.70.0 Fax: 0049.(0)39482.70.102. Web: www.jcbvibromax.com

JCB reserves the right to change specifications without notice. Illustrations & specifications shown may include optional equipment and accessories. The JCB logo is a registered trademark of J C Bamford Excavators Ltd.

Printed in the UK on paper made from sustainable forests. The pulp used in the manufacture of this paper is made from renewable timber produced on a fully sustainable basis, and is bleached without the use of chlorine gas (ECF – Elemental Chlorine Free). This paper is suitable for recycling.

9999/5296 10/07 Issue 4